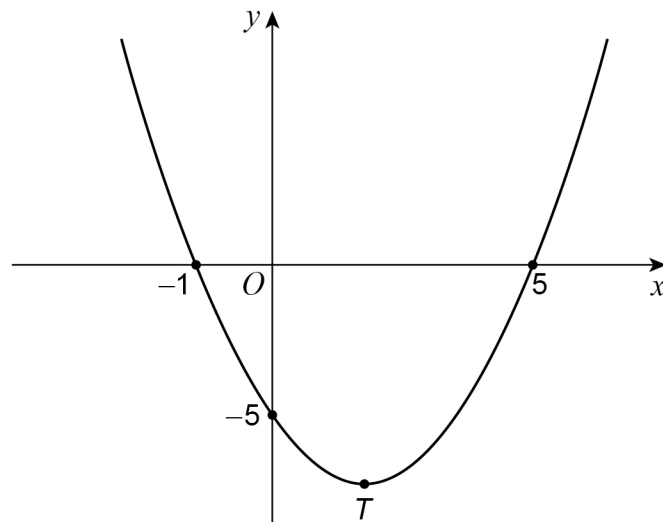


1 Here is a sketch of the curve $y = x^2 - 4x - 5$

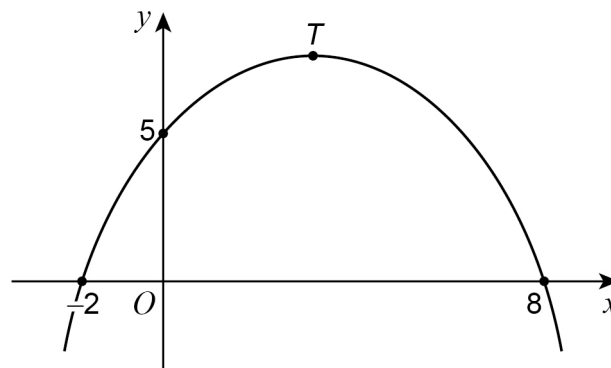


1 (a) Write down the **two** roots of $x^2 - 4x - 5 = 0$

[1 mark]

Answer -1 and 5 ⁽¹⁾

2 (a) Here is a sketch of a quadratic graph.



Complete the following statements.

[2 marks]

The value of the **y-intercept** is 5 ✓ ①

The **x-coordinate** of the turning point, *T*, is 3 ✓ ①